

TM9-2320-273-24P

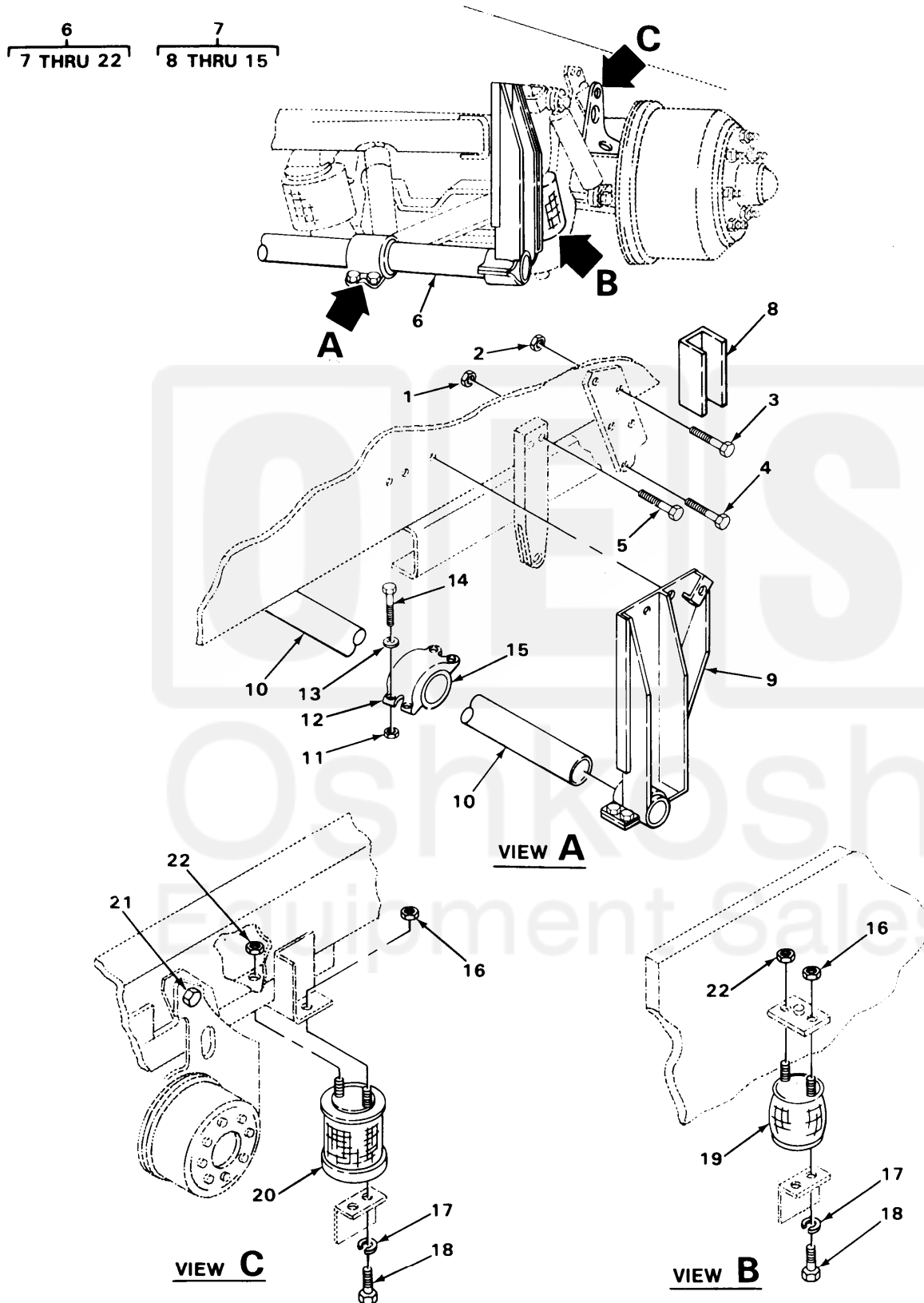


FIGURE 110. PUSHER AXLE, SUSPENSION ASSEMBLY, AND AIR RIDE SPRING LOBE ASSEMBLY (MODELS M917, M919 AND M920).

Current part is item (7) on diagram. Available at www.oshkoshequipment.com

SECTION II (1)	ITEM (2)	SMR (3)	FSCM (4)	PART NUMBER	(5)	DESCRIPTION AND USABLE ON CODE (UOC)	(6)	QTY
						GROUP:1108 WALKING BEAMS,STUB AXLES AND PARTS		
						FIGURE 110. PUSHER AXLE,SUSPENSION ASSEMBLY AND AIR RIDE SPRING LOBE ASSEMBLY (MODELS M917,M919 AND M920).		
1	PAFZZ	34623	MB219B20000			NUT,PLAIN,EXTENDED UOC:U23,U25,U26		4
2	PAFZZ	34623	M/219B20002			NUT,PLAIN,EXTENDED UOC:U23,U25,U26		12
3	PBFZZ	34623	MB25-20031			SCREW,CAP, SOCKET HE UOC:U23,U25,U26		4
4	PBFZZ	34623	M/25-20032			SCREW,CAP,HEXAGON UOC:U23,U25,U26		8
5	PAFZZ	34623	MC25-20001			SCREW,CAP,HEXAGON UOC:U23,U25,U26		4
6	PAFZZ	34623	9197			AXLE ASSEMBLY,SUSPE UOC:U23,U25,U26		1
7	XAFFF	34623	MA94-21000			.SUSPENSION ASSEMBLY UOC:U23,U25,U26		1
8	XAFZZ	34623	MA355-21000			..SUB FRAME CHAN ASSY UOC:U23,U25,U26		1
9	PBFZZ	34623	2186			..FRAME SECTION,STRUC UOC:U23,U25,U26		1
10	PAOZZ	57005	1156			..TORQUE ROD,TANDEM UOC:U23,U25,U26		1
11	PAFZZ	24617	274639			..NUT,SELF-LOCKING,HE UOC:U23,U25,U26		4
12	PAFZZ	34623	1132			..CLAMP,HUB UOC:U23,U25,U26		1
13	PAFZZ	24617	9422850			..WASHER,FLAT UOC:U23,U25,U26		4
14	PAFZZ	73342	223738			..SCREW,CAP,HEXAGON UOC:U22,U25,U26		4
15	PFFZZ	34623	1178			..BUSHING,RUBBER UOC:U23,U25,U26		2
16	PAOZZ	24617	219758			.NUT,PLAIN,HEXAGON UOC:U23,U25,U26		4
17	PAOZZ	96906	MS35338-48			.WASHER,LOCK UOC:U23,U25,U26		8
18	PAOZZ	96906	MS18154-113			.SCREW,CAP,HEXAGON UOC:U23,U25,U26		8
19	PCOZZ	34623	MA207-21234			.LOBE ASSEMBLY,AIR L UOC:U23,U25,U26		2
20	PCOZZ	34623	MA207-21233			.LOBE,AIRRIIDE SPRING UOC:U23,U25,U26		2
21	PBFZZ	34623	1148			.SCREW,CAP,HEXAGON UOC:U23,U25,U26		2
22	PAOZZ	72582	120371			.NUT UOC:U23,U25,U26		4

END OF FIGURE

Current part is item (7) on diagram. Available at www.oshkoshequipment.com